

Exhibition
accompanying the
14th PTS-CTP DEINKING SYMPOSIUM
Tue 27 April - Thu 29 April 2010
at PTS
D - 80797 Munich, Hess-Strasse 134

Dates

Lectures and exhibition: Tuesday, 27 April – Thursday, 29 April 2010
Build-up of stands: Monday, 26 April 2010, from 7:00 a.m.
Dismantling: Thursday, 29 April 2010, after 5:00 p.m.

Prices

Exhibition space is available in the assembly hall of PTS directly adjacent to the auditorium, in the form of modules having a depth of 2 m each. Module widths can be chosen from the following range: 2, 3, 4, 5 or 6 m.

Price per unit area of 2 m²: € 400 plus VAT (10% discount to members*).

Services included:

- Exhibition space for the entire duration of the event,
- Table (rectangular or trapezium-shaped 140 x 70 cm, height of 75 cm)
- Bistro table (diameter of 85 cm, height of 110 cm)
- Chairs
- Catering during breaks (coffee breaks and lunches).
- One dinner
- For stand reservations of 8 m² and more, one person is admitted free of charge to the lectures

*) Members of Forschungsvereinigung Papiertechnik (FPT), Forschungsvereinigung Papiertechnische Stiftung (FPS) and Verband Deutscher Papierfabriken (VDP)

Tabletop exhibits

If you wish to lay out catalogues or informative material, you may reserve tabletop exhibits.

Price per unit area of 45 cm x 75 cm (for up to four stacks of DIN A4 material): € 100 plus VAT.

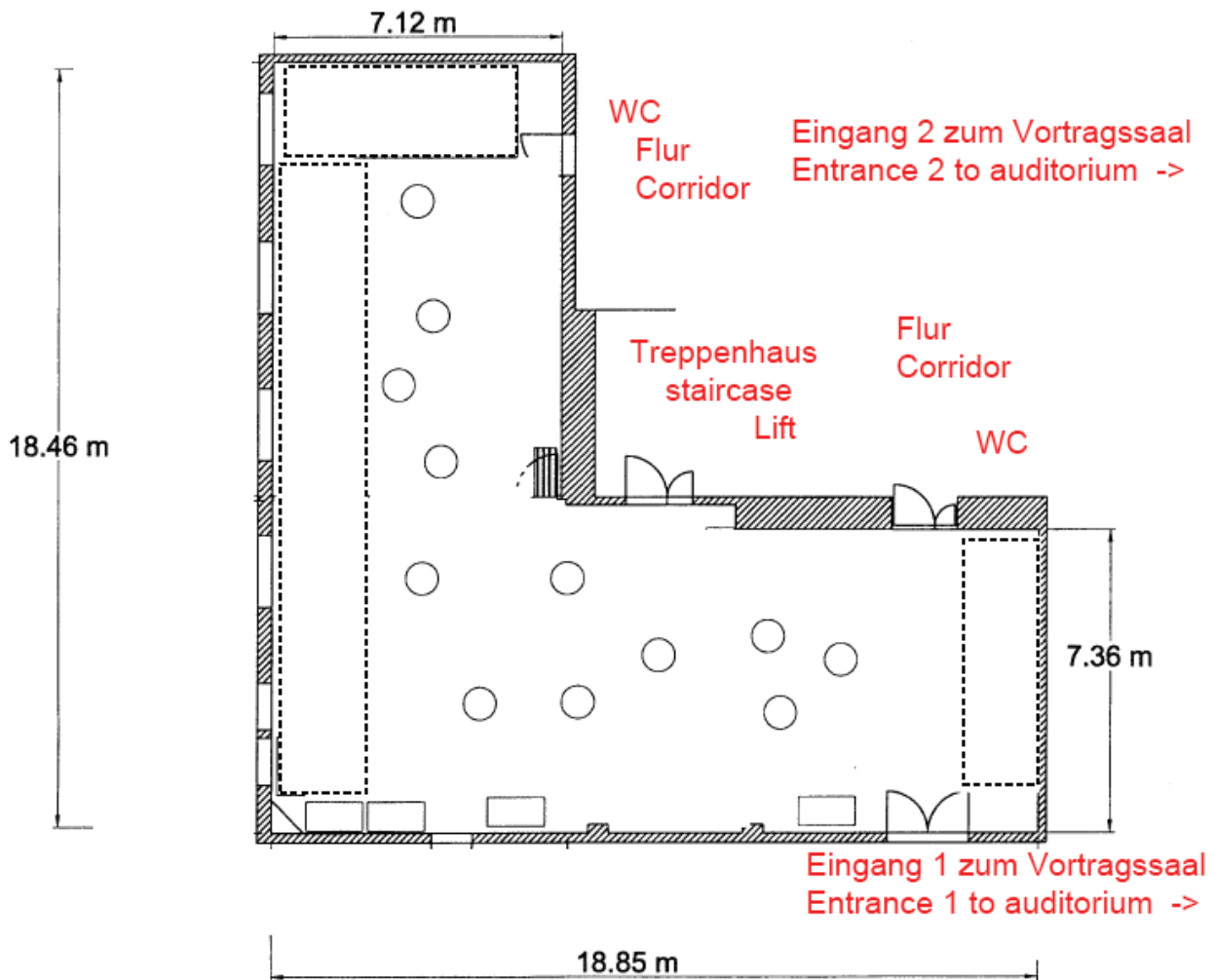
Entries and advertisements in the show directory

All exhibitors are offered a free entry in the show directory of the conference proceedings. You will be listed with your name, address and product range to be furnished in German and English (one page DIN A4 each). You may also choose to have your (colour-printed) company supplement included in the show directory at a price of € 150 plus VAT (based on an anticipated audience of approx. 200). The supplement should comprise no more than two sheets DIN A4, paper grammage of 60 – 150 g/m².

Your contact at PTS: Mr Heinrich Hammer

E-mail: Heinrich.Hammer@ptspaper.de

Telephone: +49 (0) 89/ 121 46- 200 or mobile: +49 (0) 176/ 121 46 200



The assembly hall directly adjacent to the seminar rooms offers various and flexible options for accompanying exhibitions.